

The AGROSTA®14Usb is a high precision penetrometer designed for Firmness testing of apples, pears, mangos, bananas and other crispy foodstuff or Fruits and Vegetables



Congratulations for having acquired this Agrosta@14Usb !

Your box contains :

- The device itself composed by the Usb box, and the sensor (Pre-equipped with a tip of 11)
- The tip of 11 : Diameter 11.11 mm (7/16") – Surface 0.97 cm² used on Apples
- A tip of 8 diameter 7.94 mm (5/16") – Surface 0.49 cm² used on peaches, pears, kiwis, melon flesh..
- The software to be installed (On a USB Stick)
- The manual
- A certificate of conformity
- The optional tips or systems if ordered

AGROSTA Sarl

13 Rue du Bastringue – 76440 SERQUEUX - FRANCE

lak@agrosta.org - www.agro-technologies.com – Tel +33 06 89 49 43 40

The AGROSTA®14USB has been completely designed and assembled in France. The electronic board (Made in USA) has been manufactured through a highly robotized process.
The AGROSTA®14USB is not waterproof ! It is a precision instrument, avoid falls and shocks
The AGROSTA®14USB is guaranteed 2 years from the date of shipment

- Minimal Kg measurement : 300 Grams
- Maximal Kg measurement : 13500 Grams
- Resolution : +/- 1 gram



AGROSTA Sarl

13 Rue du Bastringue – 76440 SERQUEUX - FRANCE
lak@agrosta.org - www.agro-technologies.com – Tel +33 06 89 49 43 40

1/ INSTALL DRIVER

- Insert USB stick in your computer

INSTALL	14/12/2017 16:22	Dossier de fichiers	
AGROSTA_Drivers_Setup.exe	08/04/2014 15:28	Application	1 913 Ko
autorun.inf	14/12/2017 16:22	Informations de c...	1 Ko
INSTALL.EXE	26/02/2014 10:39	Application	212 Ko
INSTALL.ZIP	14/12/2017 16:22	Archive WinRAR ZIP	11 736 Ko

- Double click on “AGROSTA_Drivers_Setup.exe”
- Follow setup instructions

2/ CONNECT INSTRUMENT WITH USB CABLE TO COMPUTER



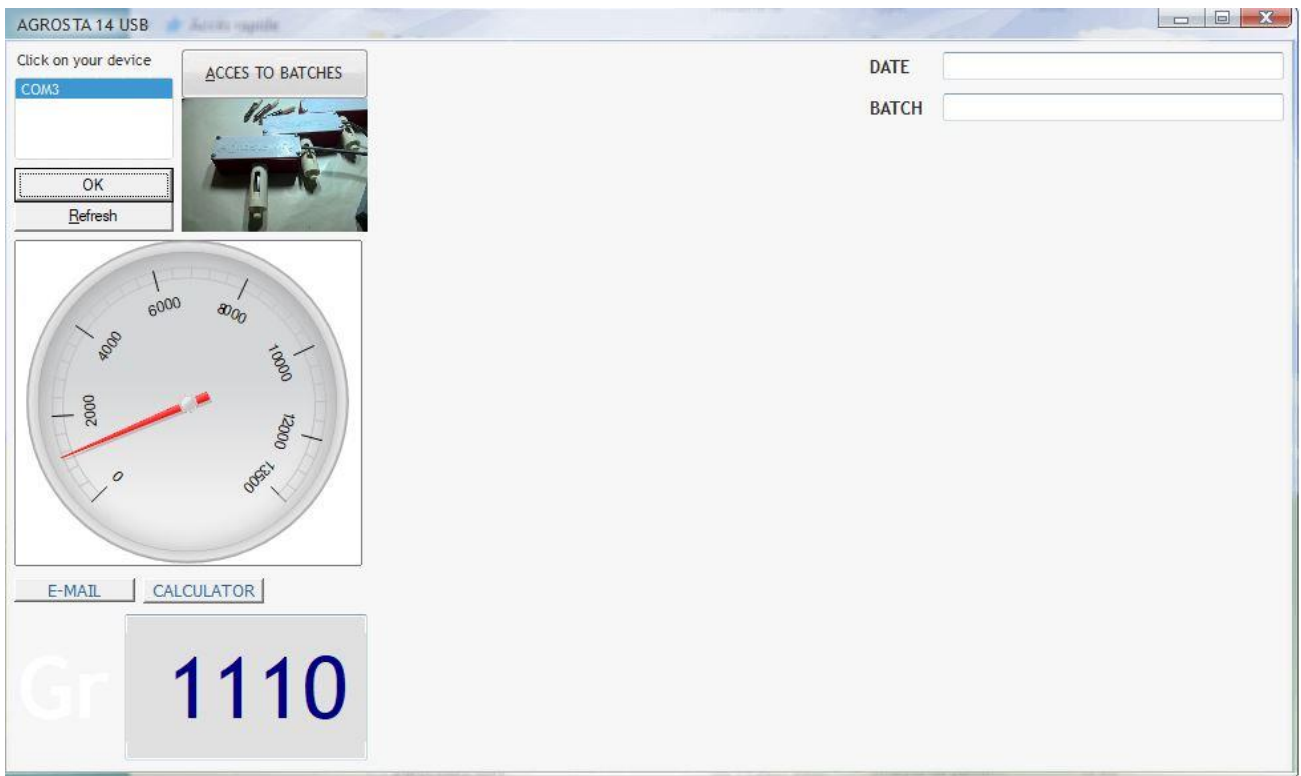
3/ WAIT A FEW SECONDS TILL IT IS RECOGNIZED

4/ INSTALL SOFTWARE

INSTALL	14/12/2017 16:22	Dossier de fichiers	
AGROSTA_Drivers_Setup.exe	08/04/2014 15:28	Application	1 913 Ko
autorun.inf	14/12/2017 16:22	Informations de c...	1 Ko
INSTALL.EXE	26/02/2014 10:39	Application	212 Ko
INSTALL.ZIP	14/12/2017 16:22	Archive WinRAR ZIP	11 736 Ko

- Double click on “INSTALL.EXE”
- Follow Setup procedure

5/ THE SOFTWARE STARTS IMMEDIATELY



- On the left side of the screen appears a list of COM ports
- Select the one corresponding to your machine, and click on OK
- If you don't know to which COM does your machine correspond, disconnect the machine, and click on Refresh – The COM that did disappear corresponds to your machine – Then reconnect and refresh again
- Usually, the last COM port corresponds to your machine

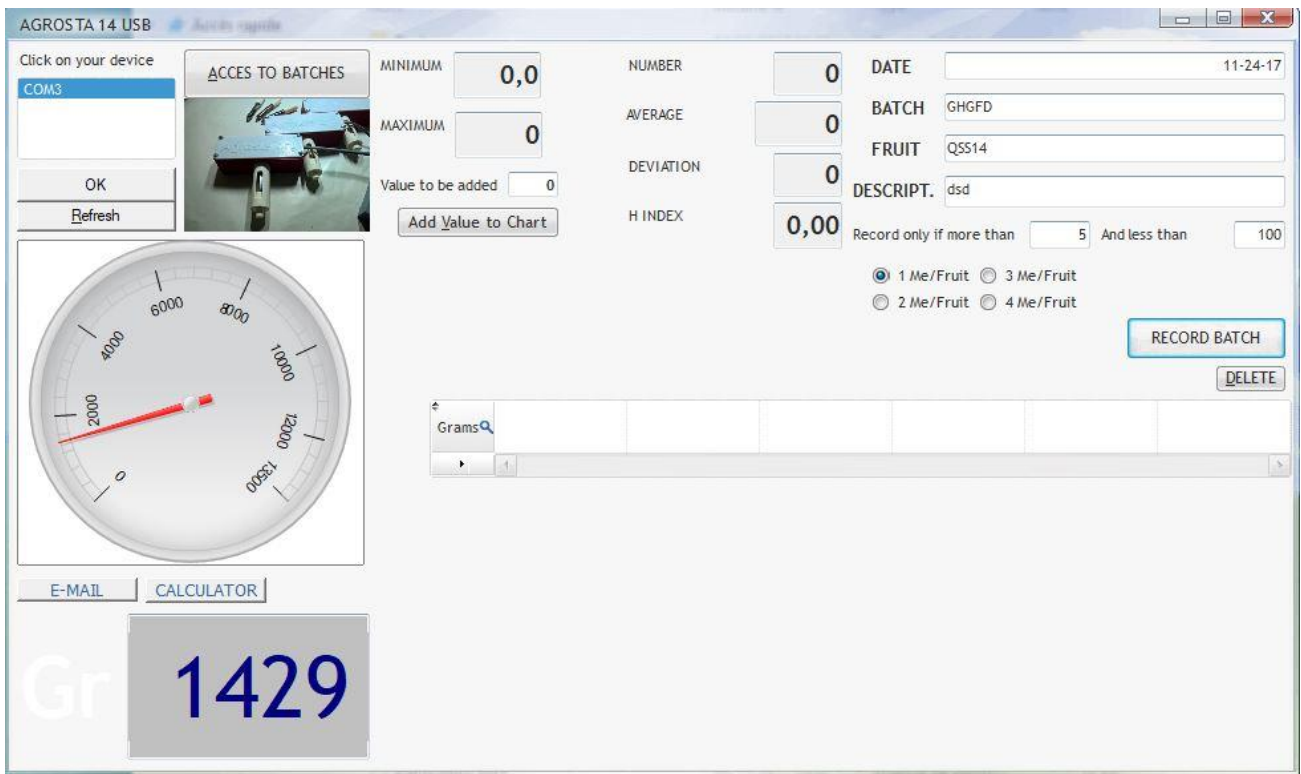
6/ TRY MEASUREMENTS BY PRESSING WITH YOUR FINGER FIRMLY ON THE TIP



AGROSTA Sarl

13 Rue du Bastringue – 76440 SERQUEUX - FRANCE
lak@agrosta.org - www.agro-technologies.com – Tel +33 06 89 49 43 40

7/ START A NEW BATCH, ENTER BATCH DETAILS



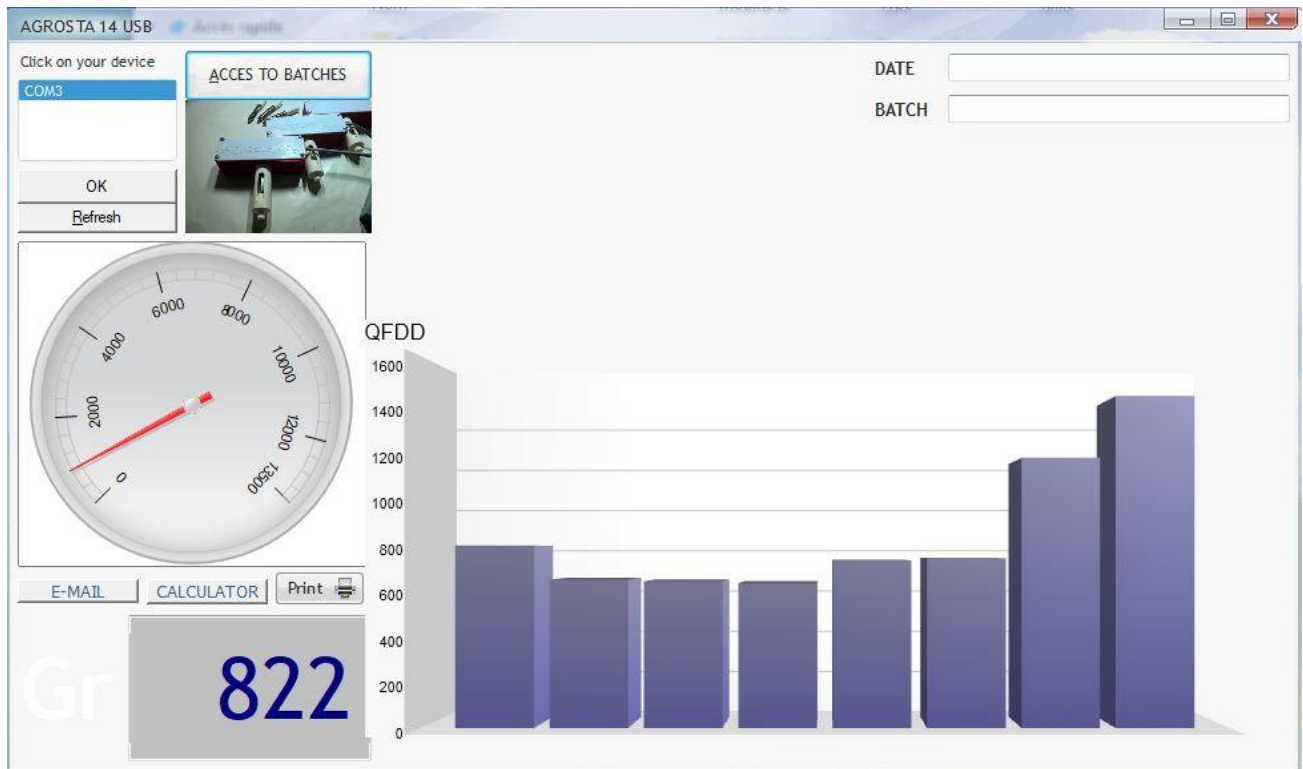
- Once batch details are entered, click on “START”
- Measure each sample one after each other by pressing till abutment



- You can choose to make from one till 4 measurements per sample, click on the corresponding parameter
- If you choose more than one measurement per fruit, Only the average of each fruit will be added in the chart

8/ RECORD BATCH

- Click on the button "RECORD BATCH"
- A graph is displayed, as well as the statistics
- You can start a new batch immediately by entering new batch details



- All data are available under Excel compatible format (.csv) in the following folder :
 - **C:\AGROSTASAVE**
- Graphs & statistics are available in the following folder :
 - **C:\AGROSTA**

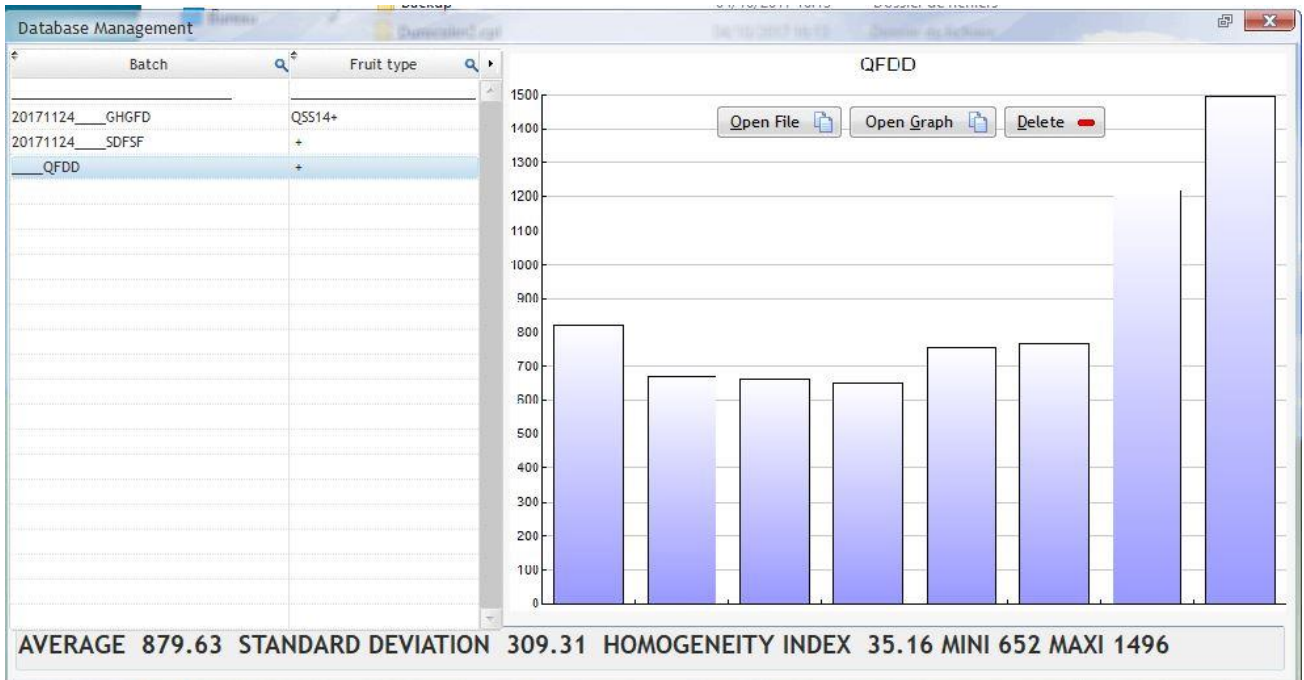
AGROSTA Sarl

13 Rue du Bastringue – 76440 SERQUEUX - FRANCE
lak@agrosta.org - www.agro-technologies.com – Tel +33 06 89 49 43 40

9/ CONSULT PREVIOUS BATCHES

Just press the button “ACCESS TO BATCHES” in order to access to previous batches graph and statistics
You can as well delete old batches from this window

Close the consultation window, the main window appears



By clicking on “Open data file”, you can open the .csv file corresponding to your batch.
Excel is launched if it is defined in your computer as default software for the .csv files

If you click on “Open graph”, the drawing software of your computer is launched, and the graph is displayed as a picture.