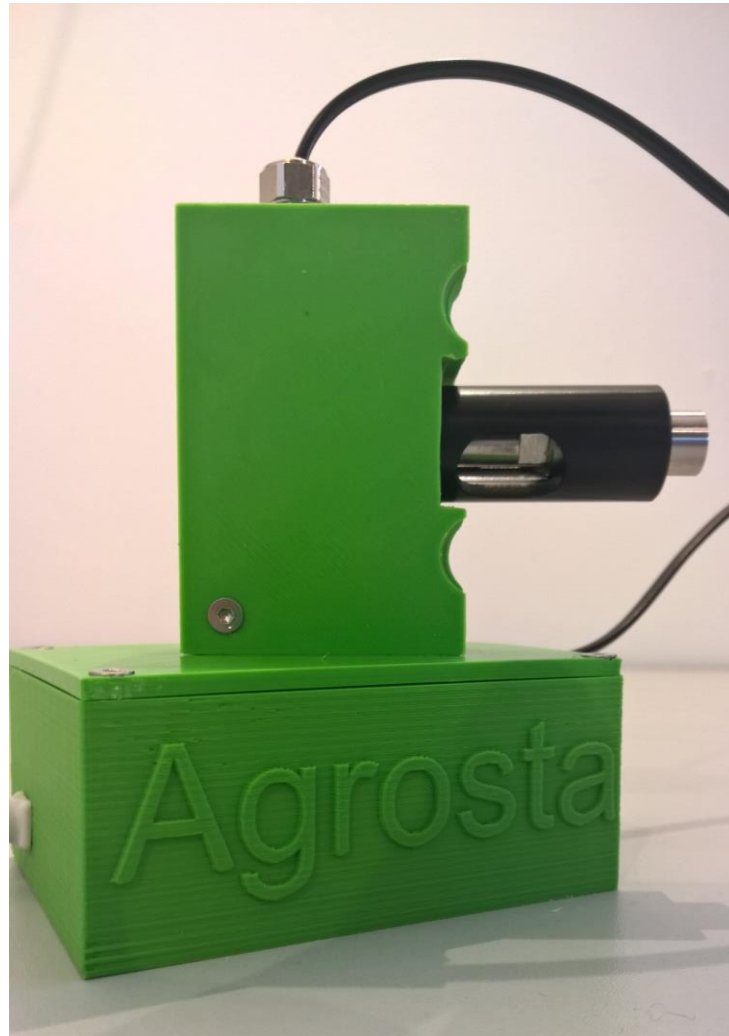


The AGROSTA®14Usb is a high precision penetrometer designed for Firmness testing of apples, pears, mangos, bananas and other crispy foodstuff or Fruits and Vegetables



Mark and patent registered.
Designed and manufactured by AGROSTA

Congratulations for having acquired this Agrosta®14Usb !

Your box contains :

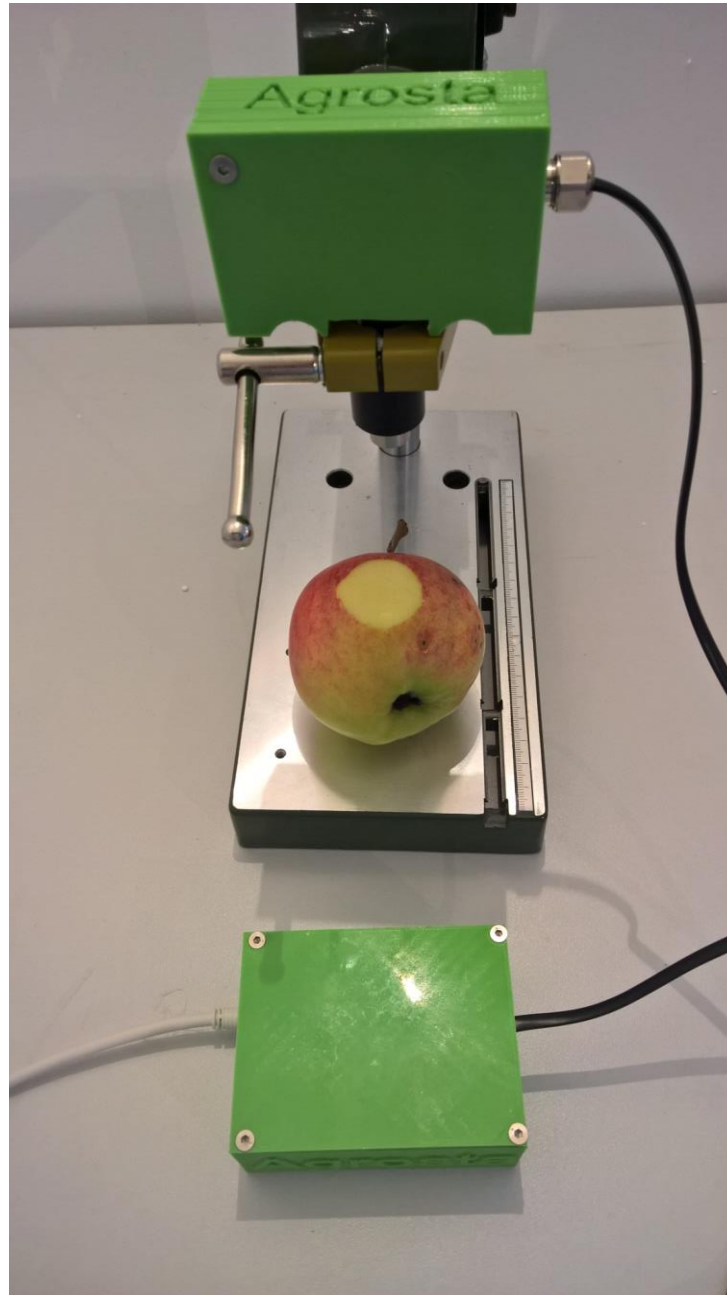
- The device itself composed by the Usb box, and the sensor (Pre-equipped with a tip of 11)
- The tip of 11 : Diameter 11.11 mm (7/16") – Surface 0.97 cm² used on Apples
- A tip of 8 diameter 7.94 mm (5/16") – Surface 0.49 cm² used on peaches, pears, kiwis, melon flesh..
- The software to be installed (On a CD)
- The manual
- A certificate of conformity
- The optional tips or systems if ordered

AGROSTA Sarl

3 Route de la Fontaine – 76440 COMPAINVILLE - FRANCE
lak@agrosta.org - www.agro-technologies.com – Tel +33 06 89 49 43 40

The AGROSTA®14USB has been completely designed and assembled in France. The electronic board (Made in USA) has been manufactured through a highly robotized process.
The AGROSTA®14USB is not waterproof ! It is a precision instrument, avoid falls and shocks
The AGROSTA®14USB is guaranteed 2 years from the date of shipment

- Minimal Kg measurement : From 0.5 Kg to 10 Kg (Settings – Trigger Threshold)
- Maximal Kg measurement : 13500 Grams
- Resolution : +/- 1 gram

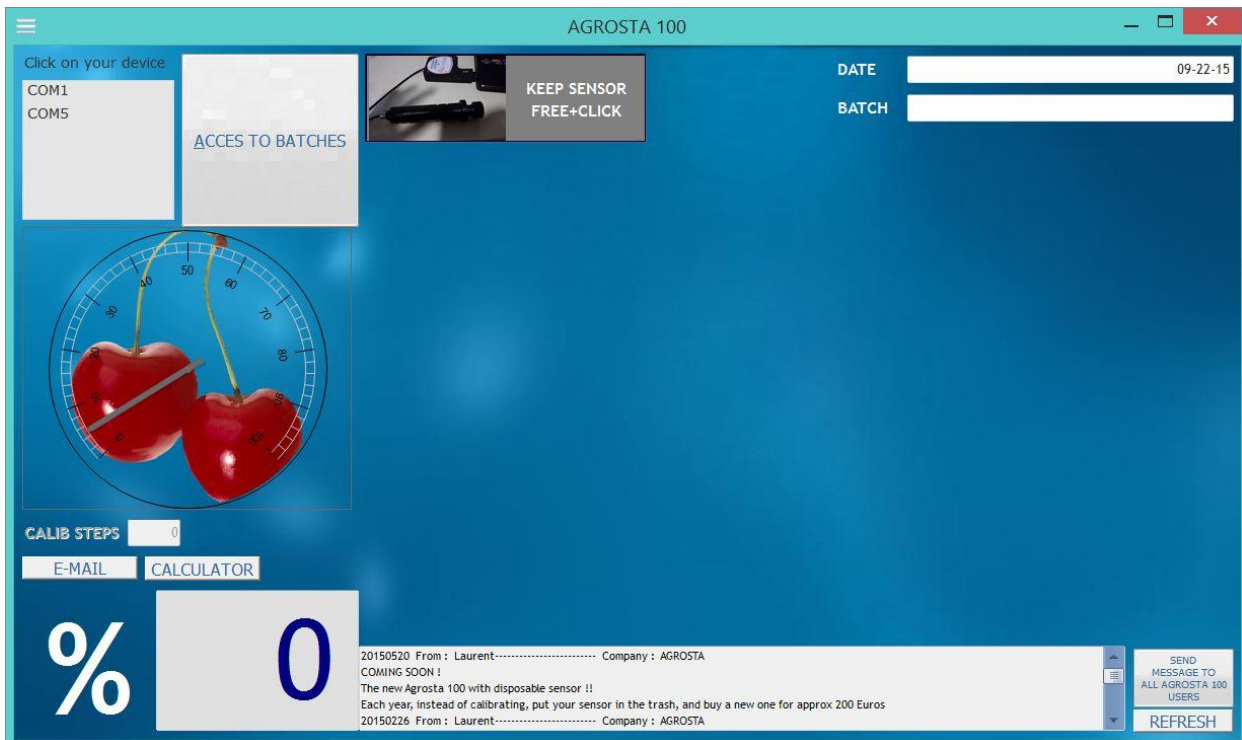


AGROSTA Sarl

3 Route de la Fontaine – 76440 COMPAINVILLE - FRANCE
lak@agrosta.org - www.agro-technologies.com – Tel +33 06 89 49 43 40

STARTING SOFTWARE

- 1) Connect your device
- 2) Wait a few seconds till your computer recognizes it
- 3) Launch the soft from your desktop
- 4) The soft starts immediately, you can choose the COM port corresponding to your device on top – left side – Click on the COM port corresponding to your device – If you have a doubt, start the device manager of your PC, and find the COM port corresponding to “FTDI” – Or, more easy, try each COM port, wait one second, and press the tip on a table in order to see whether you obtain a measure



AGROSTA Sarl

3 Route de la Fontaine – 76440 COMPAINVILLE - FRANCE
lak@agrosta.org - www.agro-technologies.com – Tel +33 06 89 49 43 40

MEASUREMENTS WITHOUT RECORDING

- 1) Connect your device to the computer
- 2) Remove a small piece of skin from your fruits – Take them one after each other, and press up to the plastic abutment



- 3) Once the tip is removed from the fruit, the maximal pressure is registered and displayed

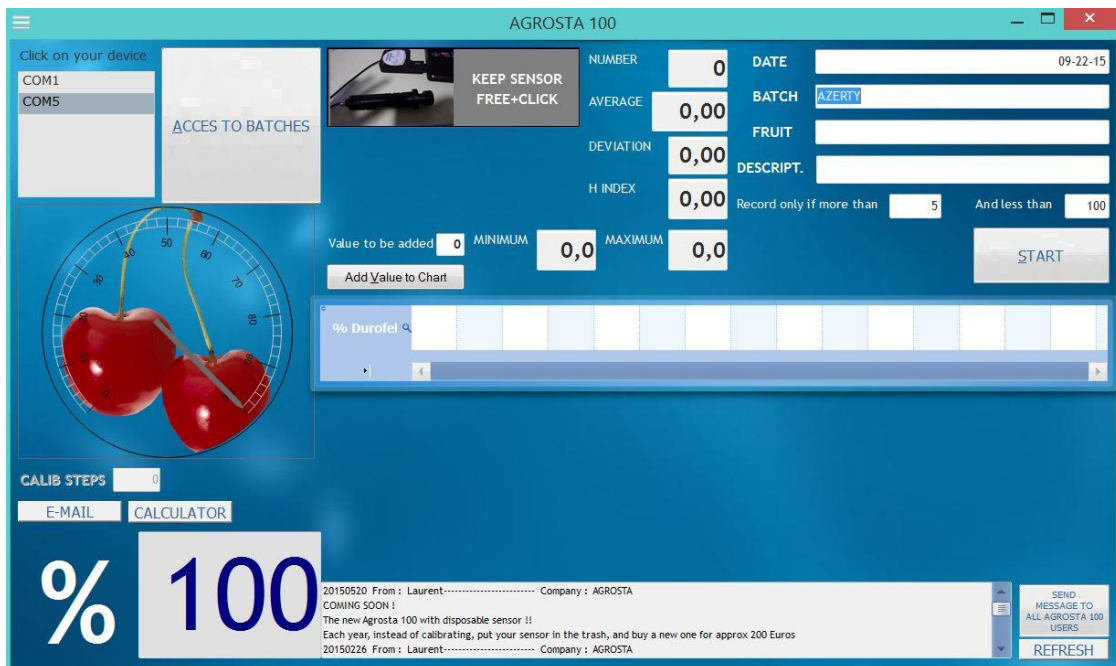


AGROSTA Sarl

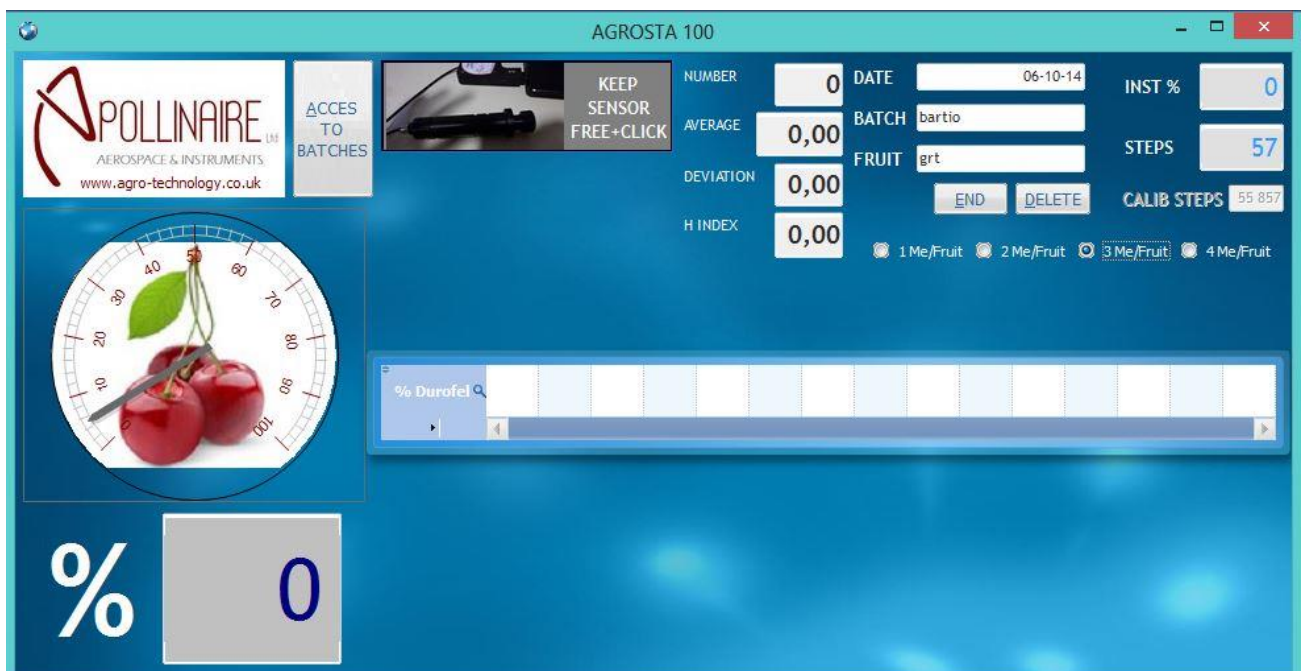
3 Route de la Fontaine – 76440 COMPAINVILLE - FRANCE
lak@agrosta.org - www.agro-technologies.com – Tel +33 06 89 49 43 40

START A NEW BATCH WITH RECORDING

- 1) Enter the name of the batch to be measured in the field « BATCH » - Avoid accents, “, /, *, ., : in the name of the batch, but you can put the date inside this name for example
- 2) Enter complementary information in the field « FRUIT » if necessary
- 3) « START » appears – click on START :



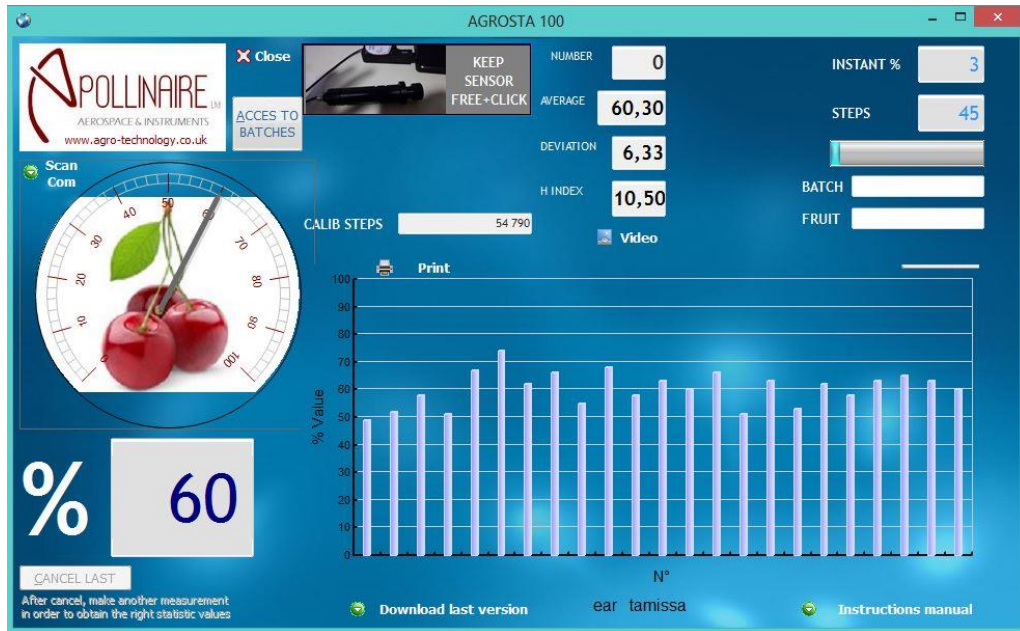
- 4) Choose the number of measurements to be made on each fruit – Only the average will be added to the list



AGROSTA Sarl

3 Route de la Fontaine – 76440 COMPAINVILLE - FRANCE
lak@agrosta.org - www.agro-technologies.com – Tel +33 06 89 49 43 40

5) Make the measurements



- 6) When the batch is finished, click on « END » - the button disappears, and a graph is displayed
- 7) All data are available under Excel compatible format (.csv) in the following folder :
 - **C:\AGROSTASAVE**
- 8) Graphs & statistics are available in the following folder :
 - **C:\AGROSTA**
- 9) You can start a new batch by entering a new batch name

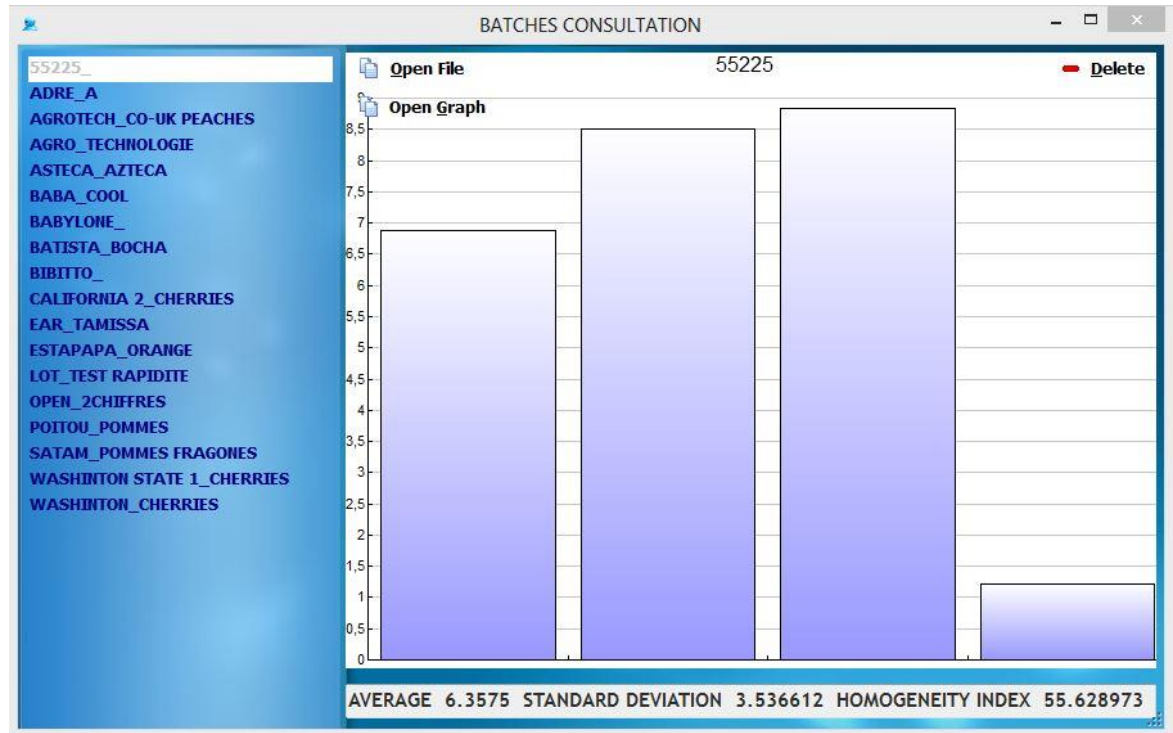
AGROSTA Sarl

3 Route de la Fontaine – 76440 COMPAINVILLE - FRANCE
lak@agrosta.org - www.agro-technologies.com – Tel +33 06 89 49 43 40

6th STEP – CONSULT PREVIOUS BATCHES

Just press the button “ACCESS TO BATCHES” in order to access to previous batches graph and statistics
You can as well delete old batches from this window

Close the consultation window, the main window appears



By clicking on “Open data file”, you can open the .csv file corresponding to your batch.
Excel is launched if it is defined in your computer as default software for the .csv files

If you click on “Open graph”, the drawing software of your computer is launched, and the graph is displayed as a picture.

AGROSTA Sarl

3 Route de la Fontaine – 76440 COMPAINVILLE - FRANCE
lak@agrosta.org - www.agro-technologies.com – Tel +33 06 89 49 43 40